

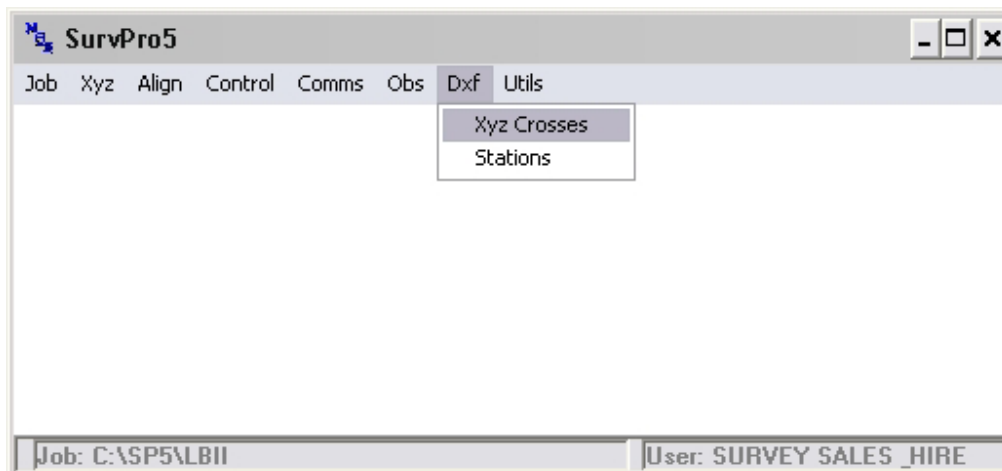
Importing Survey Data into AutoCad

Search for your .CSV file from SD card (this is the ASCII file format) and copy it to a folder on the computer (I'd suggest making a Survey folder on your C: drive)

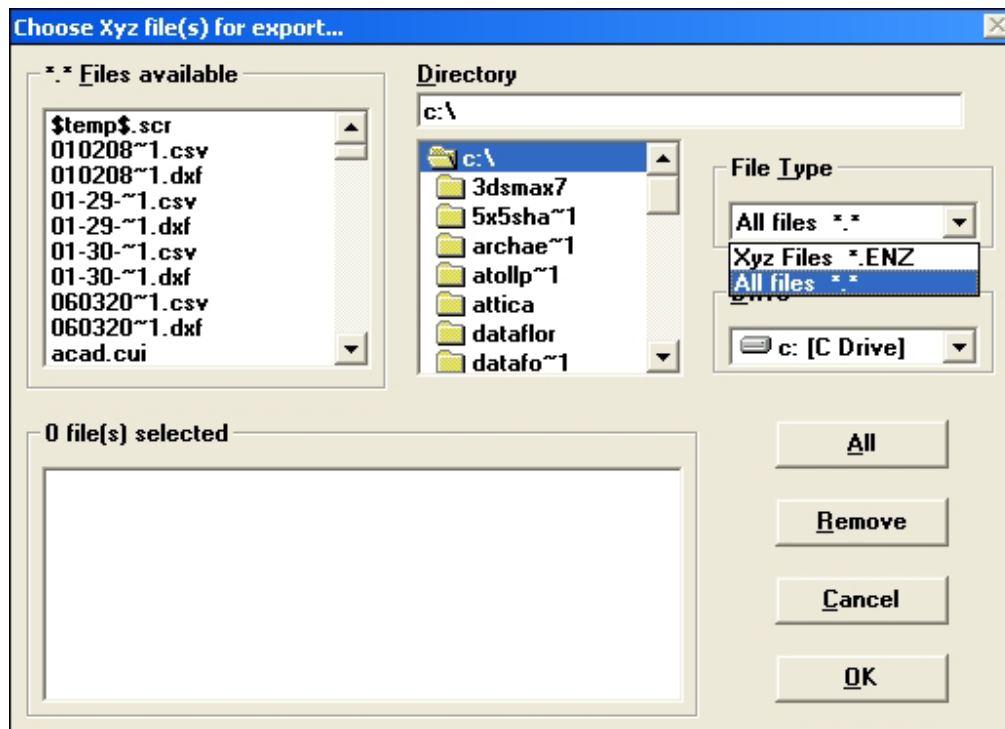
Now open Surv Pro

Select DXF.

Select XYF crosses



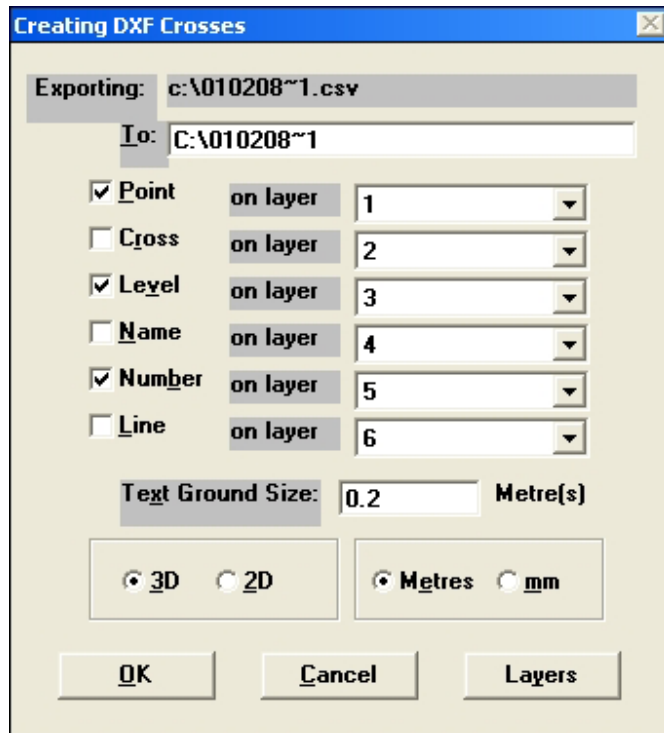
Select all files in file type



Search for your .CSV file visible in Files available

Select the file and click OK

The following screen will appear. Deselect cross, name and line. Change the text size from 1.0 to 0.2. Your selections should look like the screen below.



Press OK

Now your survey file is an AutoCAD .DXF file. The file will be saved in the same location as the original .CSV survey file.

Open AutoCAD

Your .DXF file will now be available to open in AutoCAD