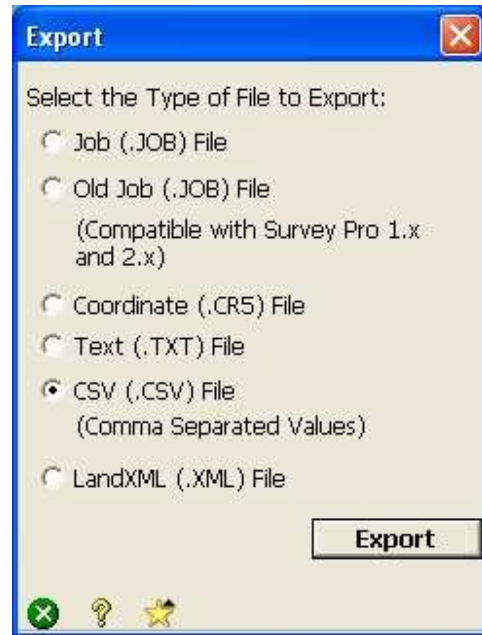
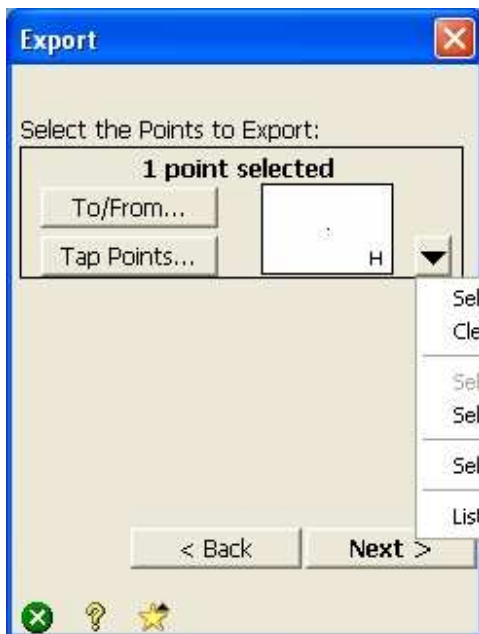


Recon to AutoCAD

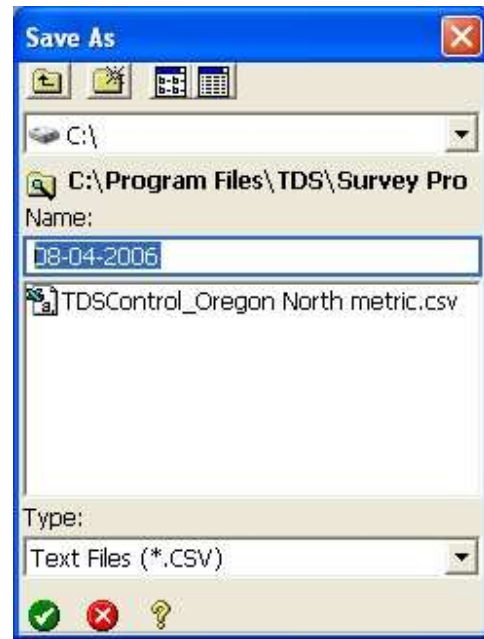
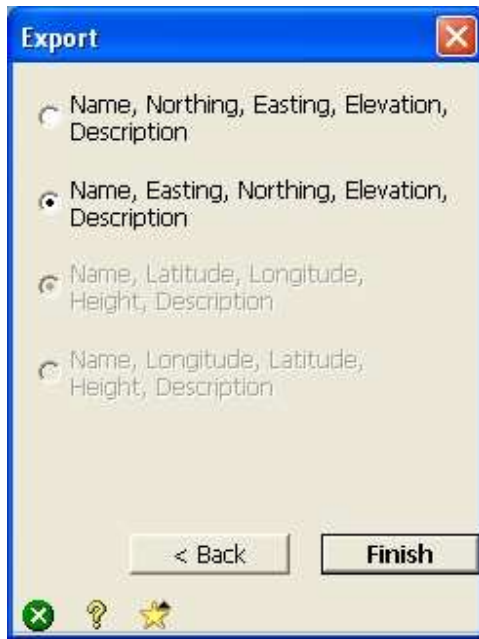
SurvPro can be used to convert Comma Separated Value files (.csv) into AutoCAD Dxf file format. Data collected from the Recon is stored in a .job format, but can be exported to create files of differing type. Luckily for us one of these is the CSV format!!



Select Export from the File Menu, then CSV before clicking Export



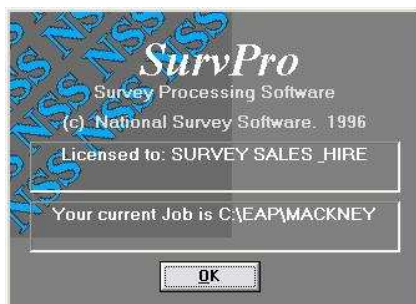
Select All Points from the pull down menu, then Next (Units should be Meters which would have been selected during actual Survey Setup)



Make sure you select Name, Easting..... Then save

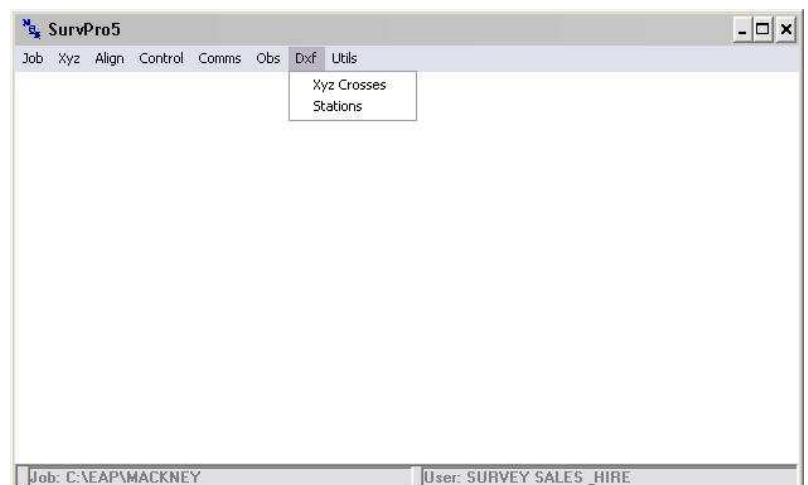
Now you can transfer the file from the Recon to the Laptop

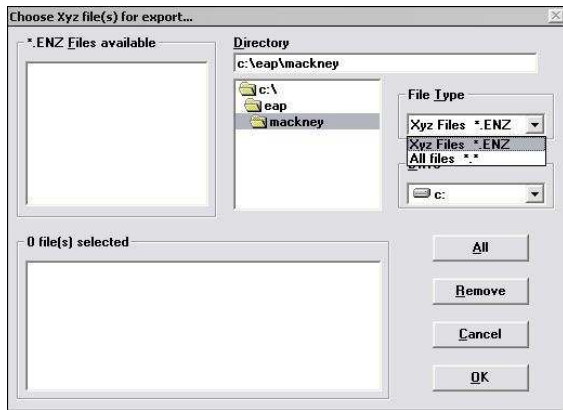
Once on the Laptop open SurvPro



You don't need to worry about which job you're in

Choose Dxf from the menu
Then select Xyz Crosses





Select to view All files from the File Type bar
Several files can be selected if desired
Click OK

I deselect Lines and change the text size to 0.4!



The Dxf file should now be created

Ben